



# Coverage Checker

< For Easy Coverage Measurement >

TCV- 2A

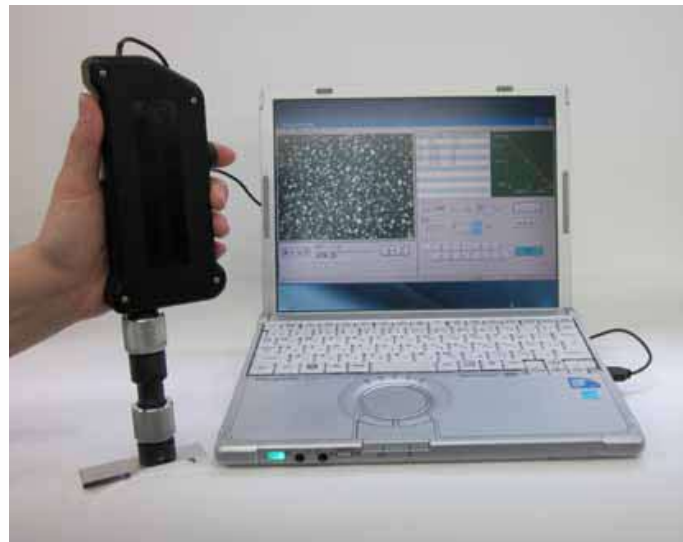
Ihr Ansprechpartner:

**schnür + haller**

Ing. Schnür + Haller KG  
Untere Waldplätze 23  
70569 Stuttgart

Tel. +49 (0)711 687007 0  
Fax +49 (0)711 687007 86

[www.shkg.de](http://www.shkg.de)  
[sh@shkg.de](mailto:sh@shkg.de)



## What's Coverage Checker?

**Coverage Checker is the device for easy and precise coverage measurement instead of human eyes.**

**Coverage data is registered into Coverage Checker in advance. Coverage value is calculated from correlation between coverage data table and captured target image.**

**Install Coverage Checker software in a your PC from attached CD-ROM. (Available OS: Windows XP, 7 32bit)**



PC is prepared by user (Windows XP, 7)

- **Stable measurement result by any operator**
- **COVERAGE CHECKER is available for coil spring bore and narrow area**
- **COVERAGE CHECKER can measure hole inside with the dedicated nozzle**
- **Visual coverage measurement requires much experience and skill. With COVERAGE CHECKER, even beginner can measure coverage as well as skilled operator.**
- **COVERAGE CHECKER is also optimum for educational tool**



【Coil spring bore measurement】



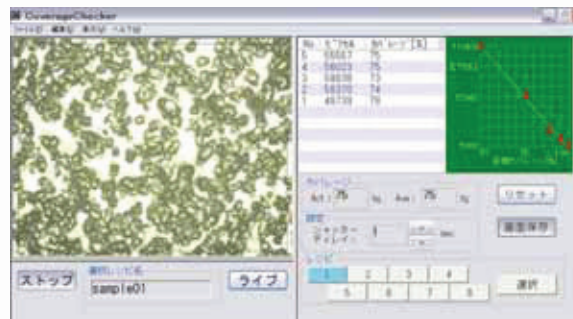
【hole inside measurement】

## Coverage Checker function

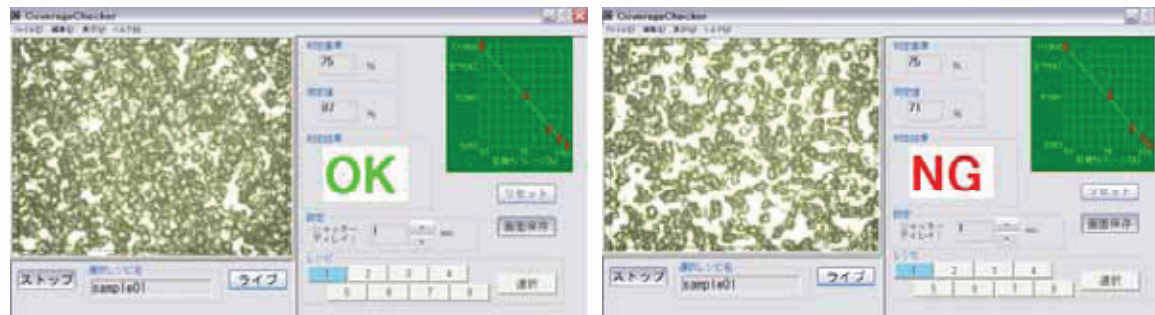
Coverage Checker has “Measurement mode” and “OK/NG mode”.

In “Measurement mode”, result is shown in coverage value calculated in basis of recipe. In “OK/NG mode”, result is shown in pass/fail (OK/NG).

### 1) Measurement mode: Average value of repeatedly measured results

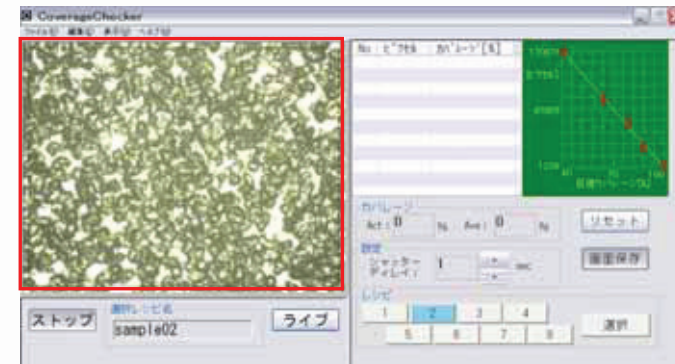


### 2) OK/NG mode: Judgment whether each result satisfies criterion



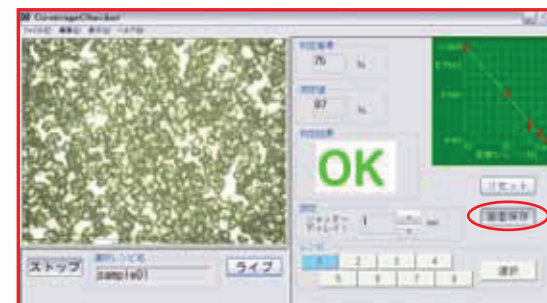
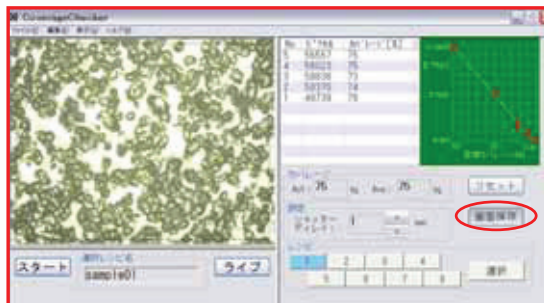
## Other functions

**Coverage Checker can record captured images of target surface into hard disc.**



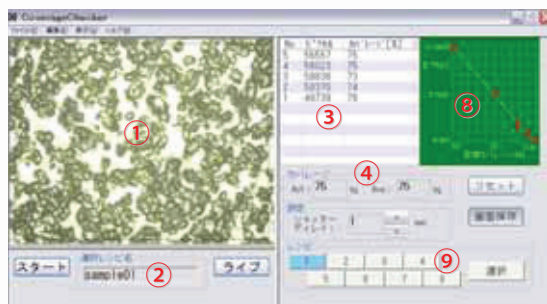
**Independent from image capturing function, in “Measurement mode” or “OK/NG mode”, whole displayed screen can be recorded.**

**By clicking “SAVE VIEW” button, not only captured (measured) image but also measurement information (recipe name and measurement result) can be recorded.**

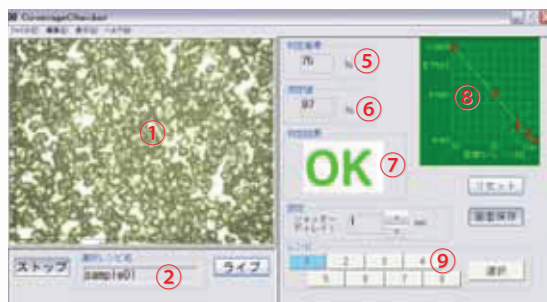


## Operation screen

**Measurement is easy by only touching screen. Access to parameter adjustment for quantification is protected with password to avoid wrong operation by irrelevant person.**



【Measurement mode】



【OK/NG mode】

### 【Description】

- ①LIVE display screen: Real time camera view
- ②Selected recipe name: File name of selected recipe
- ③Coverage records: Records of coverage measurement results
- ④Coverage measurement result: Last measurement result and average value
- ⑤Criterion: Criterion of pass/fail is displayed
- ⑥Measurement value: Coverage measurement result
- ⑦Judgment: OK/NG result on criterion
- ⑧Recipe graph: Selected recipe graph
- ⑨Recipe select: One touch call for registered recipe

## Tip of Coverage Checker

About camera –Telecentric Optical System-

Because light usually has spreading angle from its source, contrast decreases due to several direction optical elements. For more precise coverage measurement with clearer contrast, Telecentric Optical System lens is applied on object side.

As its feature, captured image is stable even if object surface slightly moves or leans against light axle. Moreover, depth of focus becomes deeper. It contributes to stable magnification for whole image.

Telecentric Optical System has small diaphragm at focal point of lens to make light axle and mail beam parallel. Different from usual spherical lens, lights through diaphragm form image in parallel of light axle with Telecentric Optical System.

